

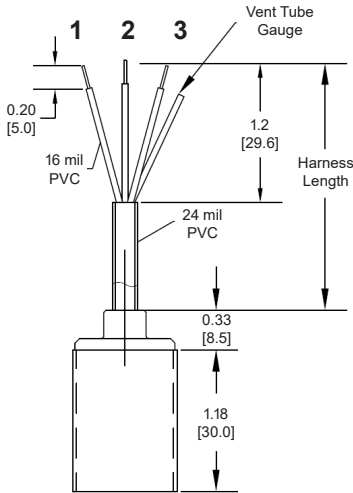


P51 Installation Information

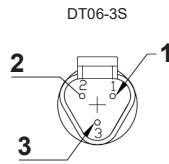
Dimensional Drawings



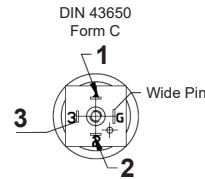
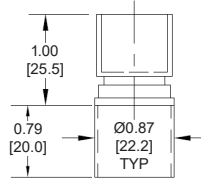
Harness



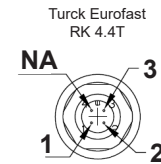
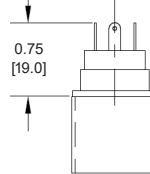
Connectors



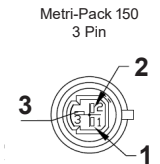
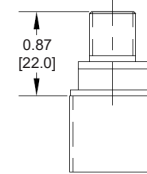
Deutsch



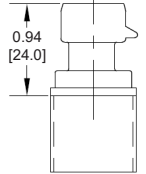
DIN 43650



M12



Packard



| Pin | Color | 0.5-4.5 V | 1-5 V | 20 mA |
|-----|-------|--------------------|-----------------|-----------------|
| 1 | Red | V_{in} (5+/-0.1) | V_{in} (8-30) | V_{in} (8-30) |
| 2 | Black | GND | GND | NA |
| 3 | White | V_{out} | V_{out} | GND |
| | Tube | Gauge | Gauge | Gauge |

Output Options

4.5 V = 0.5 - 4.5 V (5 V input only)

Applying in excess of 5.25 V supply will cause permanent sensor damage.

4.5 OVP = 0.5 - 4.5 V (5 V input only) Includes over voltage protection

Applying in excess of 5.25 V will cause sensor to not function temporarily.

5 V = 1 - 5 V (8 to 30 V input only)

20 mA = 4 - 20 mA (8 to 30 V input only)

MOV = Option for 5 V and 20 mA for voltage spike protection

Applying in excess of 30 V will cause permanent sensor damage. Applying under 8 V will cause sensor to not function normally.

Typical Connections

The following torque limits should be used when mounting the MediaSensor™ pressure port.

Recommended Torque

| | |
|---------------------------------------|-----------|
| High Pressure (>750 PSI) | 300 in lb |
| All others without port types T, U, Y | 150 in lb |
| Parts with ports T, U, Y | 100 in lb |

Contact

SSI Technologies, LLC

3200 Palmer Drive, Janesville, WI 53546

ssi-sensors.com

1 (608) 757-2000



Made In USA



SSI Technologies, LLC is an Amphenol Advanced Sensors company.



SSI Technologies, LLC
— an Amphenol Company —

Warranty

LIMITED WARRANTY: All SSI products are warranted against defective materials and workmanship for a period of one (1) year from the date of delivery to the original purchaser. Any product that is found to be defective within the one year period will be replaced at the discretion of SSI. **THIS WARRANTY IS IN LIEU OF ALL OTHER WARRANTIES, EXPRESS OR IMPLIED, OF MERCHANTABILITY, FITNESS FOR PARTICULAR PURPOSE, PERFORMANCE, OR OTHERWISE.** SSI is not an expert in the customer's technical field and therefore does not warrant the suitability of its products for the applications selected by the customer. SSI accepts no responsibility for misuse, misapplication or unauthorized modification of its products.

LIMITATION OF LIABILITY: SSI's obligation under this limited warranty is strictly and exclusively limited to the repair or replacement free of charge of such articles as are found to be defective in material or workmanship on the condition that the purchaser gives prompt written notice to SSI of any claim to breach of warranty within the warranty period, and, if requested, returns the defective articles to SSI. SSI will not assume any expenses or liability for repairs made to its articles outside of its plant, without its prior written consent. SSI reserves the right to satisfy its warranty obligation in full, with respect to defective articles, by the payment to the purchaser of all sums paid by the purchaser to SSI for such articles. **IN NO EVENT SHALL SSI BE LIABLE FOR CLAIMS (BASED UPON BREACH OF EXPRESS OR IMPLIED WARRANTY, NEGLIGENCE OR OTHERWISE) FOR ANY DAMAGES, WHETHER DIRECT, IMMEDIATE, INCIDENTAL, FORESEEABLE, CONSEQUENTIAL, OR SPECIAL.**

Terms & Conditions

Please visit [<https://www.ssi-sensors.com/contact/supplier-portal>] for information regarding the SSI Technologies, LLC Terms & Conditions.

Note: Specs are subject to change without notice.