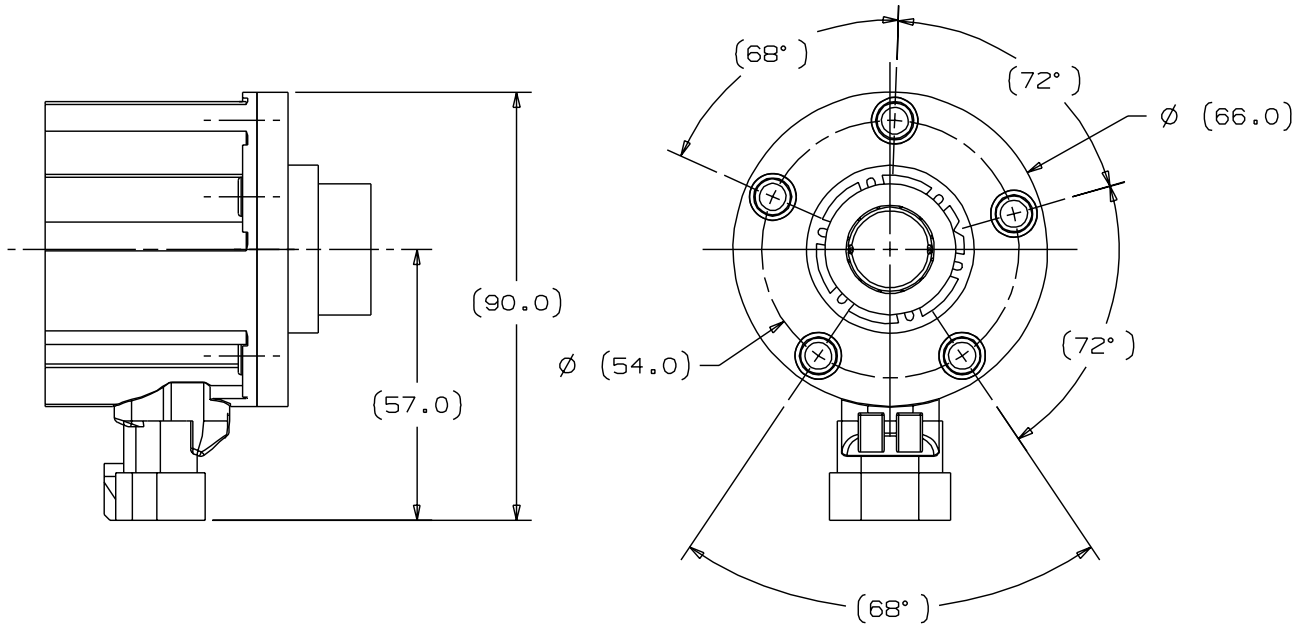


| REV. | PN NO.  | DATE     | DESCRIPTION OF CHANGE | DRAWN | APP. |
|------|---------|----------|-----------------------|-------|------|
| 1    | 09-3196 | 07/15/09 | INITIAL RELEASE       | MMT   | ABR  |



NOTES:

- 1) SENSOR FITS SAE J1810 BOLT PATTERN OR EQUIVALENT
- 2) PERSONALITY PROGRAM TO BE LOADED INTO PART AS REQUIRED
- 3) ASSEMBLY TO MEET TEST REQUIREMENTS PER 23680.1 SPI
- 4 PART NUMBER AND DATE CODE TO APPEAR ON STICKER ON UNIT  
DATE CODE EXAMPLE:  
051240136 = 136 th PART PRODUCED ON MAY 4, 2005

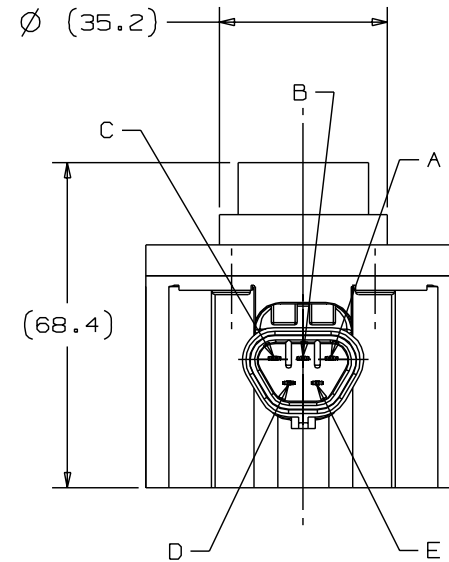
DAY OF YEAR  
(1-365)

051240136

TWO DIGIT  
YEAR

SERIAL No  
(1-9999)

| DESCRIPTION           | PIN # |
|-----------------------|-------|
| GROUND                | A     |
| SUPPLY VOLTAGE        | B     |
| SAE J1708/RS 485 DATA | C     |
| SENSOR VOLTAGE OUTPUT | D     |
| SAE J1708/RS 485 DATA | E     |



| MILLIMETERS        |    |     |
|--------------------|----|-----|
| TOLERANCE          | .0 | .00 |
| DIA. ±             | .2 | .13 |
| LINEAR ±           | .2 | .13 |
| ANGULAR ±          | 1° |     |
| DO NOT SCALE PRINT |    |     |

THIS DRAWING REPRESENTS CONFIDENTIAL AND PROPRIETARY INFORMATION OF SSI TECHNOLOGIES INC AND SHALL NOT BE USED, ALTERED OR DISCLOSED IN WHOLE OR IN PART WITHOUT THE EXPRESS WRITTEN APPROVAL OF SSI TECHNOLOGIES INC. ANY USE OF THIS DRAWING SHALL BE SUBJECT TO SSI TECHNOLOGIES INC SUPPLIER QUALITY ASSURANCE SPECIFICATION SOA9001.



SSI Technologies, Inc.

|   |   |   |   |   |   |   |   |   |   |   |   |
|---|---|---|---|---|---|---|---|---|---|---|---|
| A | B | C | D | E | F | G | H | J | K | L | M |
| N | P | Q | R | S | T | U | V | W | X | Y | Z |

|                         |                 |  |                |                           |  |
|-------------------------|-----------------|--|----------------|---------------------------|--|
| JOB<br>ACU-TRAC         |                 | DO NOT SCALE   |                | ASSEMBLY NO.<br>- - - - - |  |
| NAME<br>SENSOR ASSEMBLY |                 | 3RD ANGLE PROJECTION<br>REFER TO<br>ASME Y14.5M-1994 |                | CUSTOMER I.D.             |  |
| MATERIAL<br>SEE BOM     |                 | COMPUTER DRAWN<br>NO MANUAL CHANGE                   |                | DRWG. NO.<br>AT-AP        |  |
| DWG SIZE<br>C           | SHEET<br>1 OF 1 | SCALE<br>2:1   | VERSION<br>NX4 | REV.<br>1                 |  |